

SIERRA PACIFIC INDUSTRIES IN CALIFORNIA



We proudly employ

3,730
PEOPLE

\$292 MILLION
2024 WAGES
PAID STATEWIDE



\$907,209
2024 PHILANTHROPIC CONTRIBUTIONS

We sustainably manage



1.9 MILLION ACRES
of private forestland

9.3 MILLION
SEEDLINGS PLANTED
IN 2024



CONTACT US

(530) 378-8000 | sierra@spi-ind.com
PO Box 496028, Redding, CA 96049
[WWW.SPI-IND.COM](http://www.spi-ind.com)

We manufacture lumber, and other solid wood products in:

ANDERSON **CHINESE CAMP** **OROVILLE** **SHASTA LAKE**
BURNEY **LINCOLN** **QUINCY** **SONORA**

Our millwork and remanufacturing plants manufacture molding and parts for windows and doors as well as other value-added products such as flooring. Plant sites include:

RED BLUFF **RICHFIELD**

We design and assemble quality wood **WINDOWS AND DOORS**
at our west coast facility in **RED BLUFF.**

FIVE BIOMASS COGENERATION PLANTS use wood residuals and forest thinnings to produce renewable power for our mills, selling the excess electricity to local energy utilities. Also **two solar fields** comprised of nearly 50,000 panels.

CAPABLE OF POWERING
136,600 HOMES
IN CALIFORNIA

SIERRA PACIFIC INDUSTRIES IN CALIFORNIA

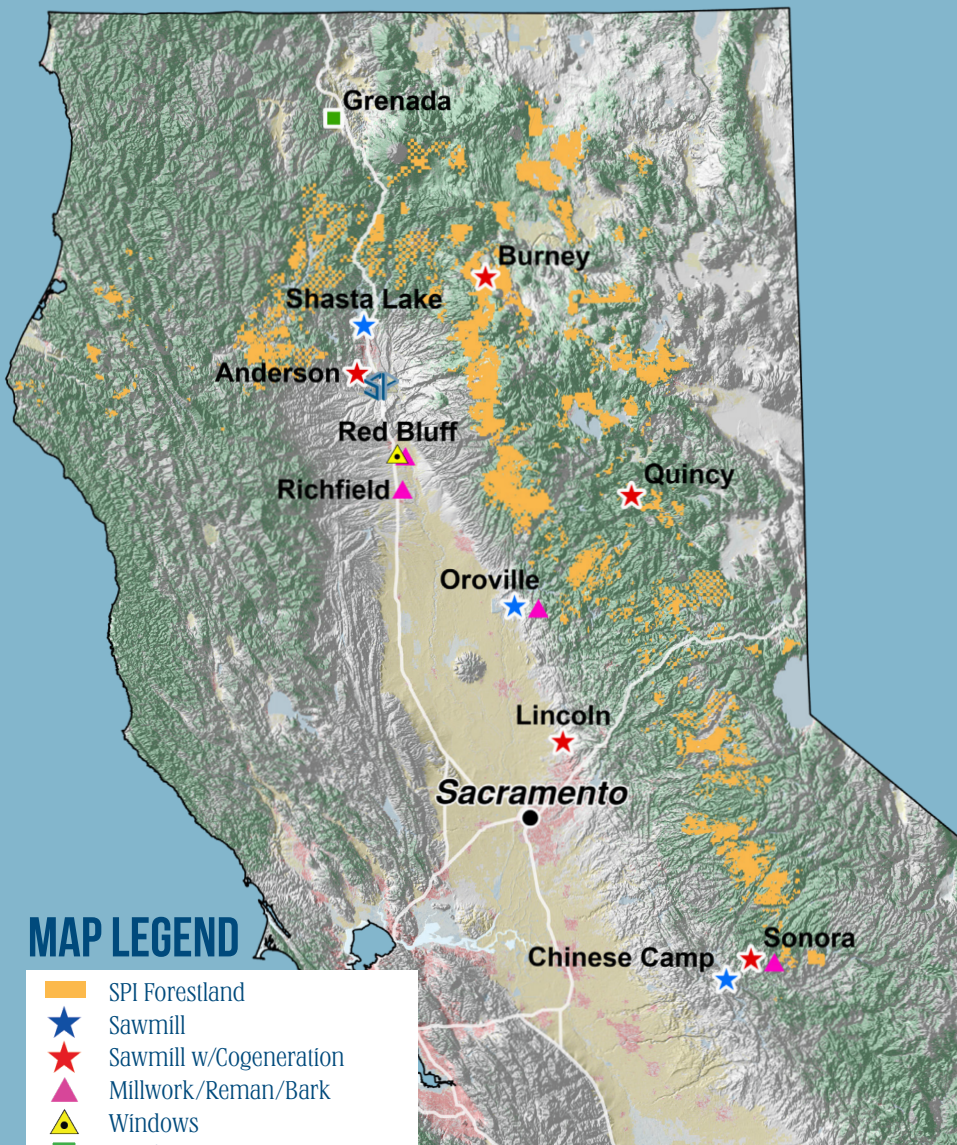


**SUSTAINABLE
FORESTRY
INITIATIVE**
SFI-00027

Our forests and mills are sustainably certified.

COUNTIES:

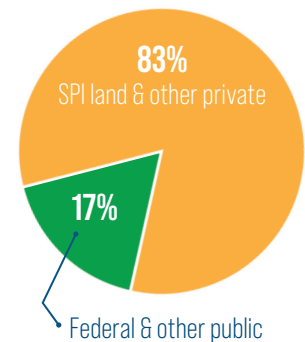
Amador
Butte
Calaveras
El Dorado
Humboldt
Lassen
Modoc
Nevada
Placer
Plumas
Shasta
Sierra
Siskiyou
Tehama
Trinity
Tuolumne
Yuba



MAP LEGEND

- SPI Forestland
- ★ Sawmill
- ★ Sawmill w/Cogeneration
- ▲ Millwork/Reman/Bark
- ▲ Windows
- Conifer Nursery & Seed Center
- SPI Main Office

MILL LOG SUPPLY



SIPI is a fourth-generation, family-owned forest products company. In 2024, the Sierra Pacific Foundation contributed nearly \$1.9 million in communities SIPI operates, as well as awarded \$571,000 in scholarships.

